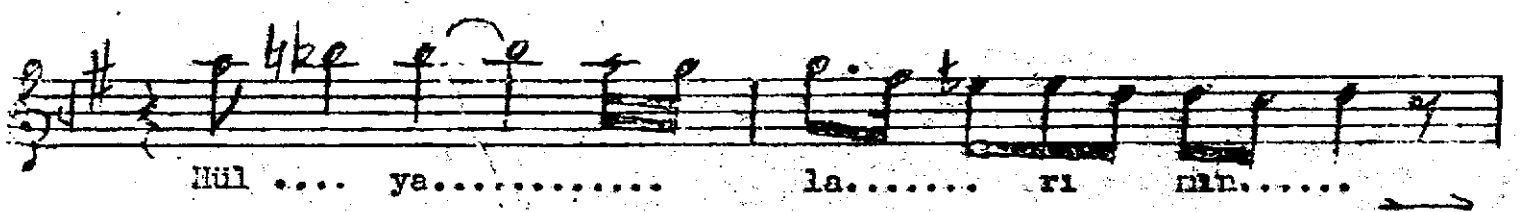
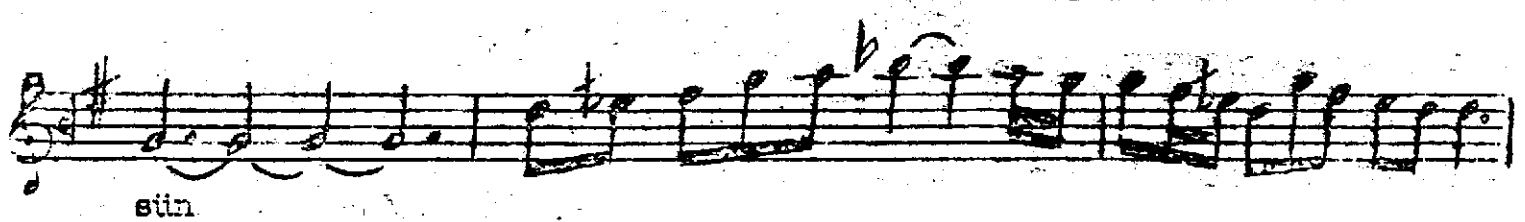
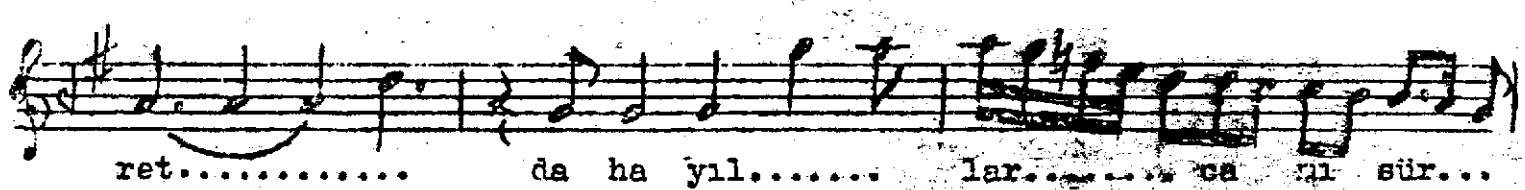
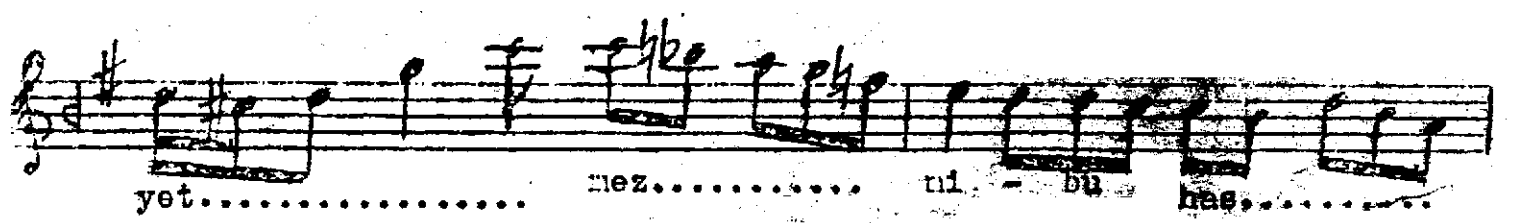
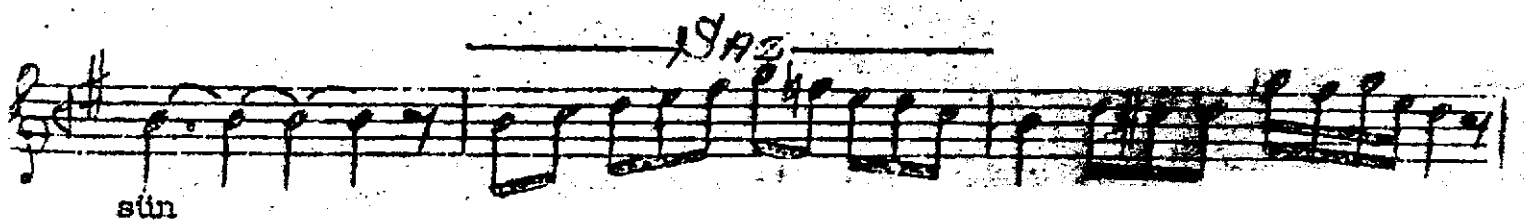
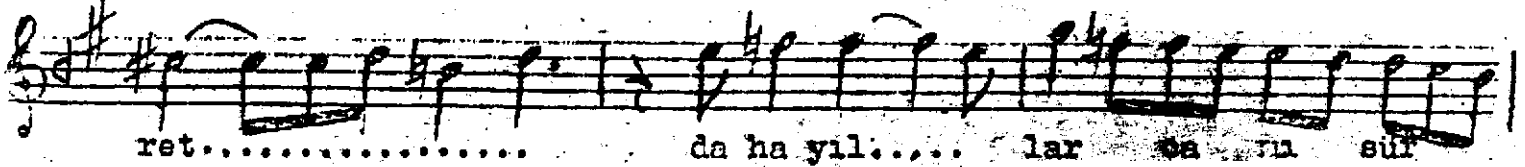
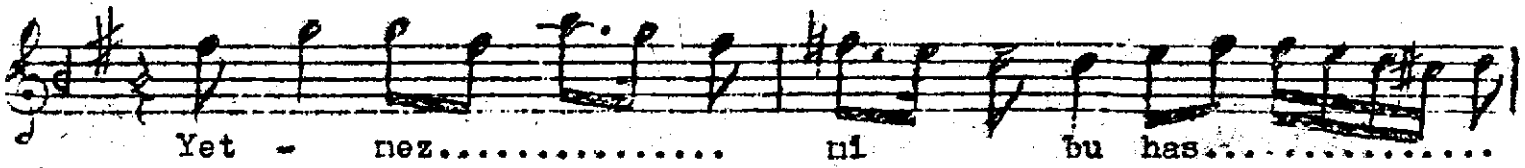
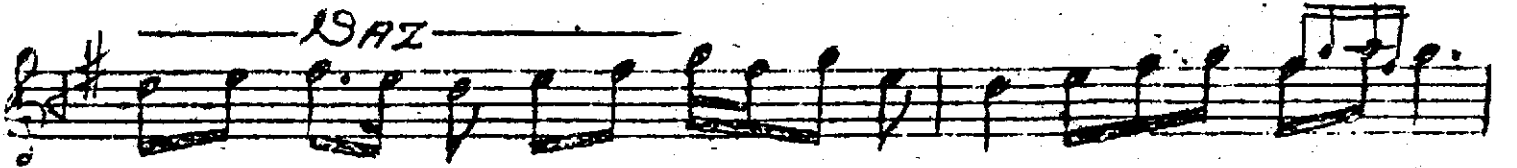
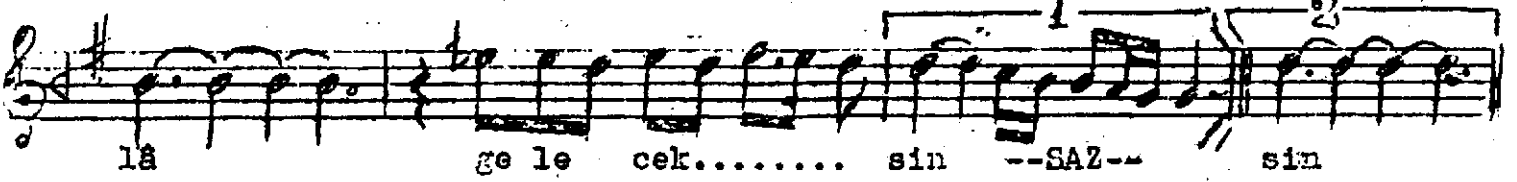
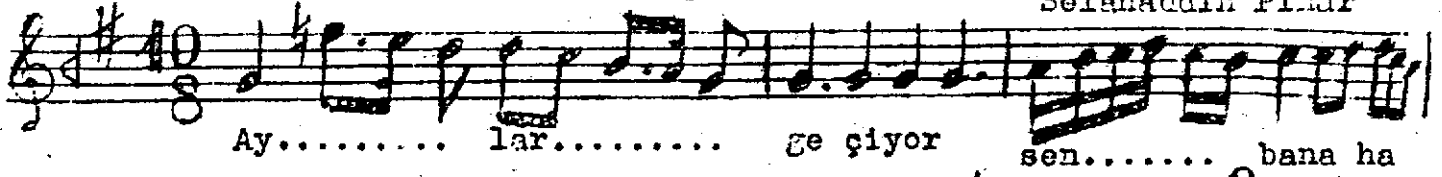


Curcuna

R A S T Ş A R K I

Selâhaddin Pınar



nen ba i bir ta.....

..... ze çi çek sin

Handwritten musical notation for the first staff of 'The Rose Tree'. The key signature is one sharp (F#). The melody begins with a quarter note G4, followed by a quarter note A4, and then a quarter note B4. The next measure contains a quarter note C5, a quarter note B4, and a quarter note A4. The following measure has a quarter note G4, a quarter note F#4, and a quarter note E4. The next measure contains a quarter note D4, a quarter note C4, and a quarter note B3. The following measure has a quarter note A3, a quarter note G3, and a quarter note F#3. The next measure contains a quarter note E3, a quarter note D3, and a quarter note C3. The final measure of the staff has a quarter note B2, a quarter note A2, and a quarter note G2.

Dek - let..... ne..... ya zık.....


..... sen de solar sen - de cü rür

[illegible]

bek..... let..... ne - ya zik.....

bek..... let..... ne - ya zik.....

..... sen de so lar sen..... de cū rūr



 sün

Aylar geçiyor sen baha halâ geleceksin
Yetmez mi bu hasret daha yılmamı sürstün
Hülyalarımın menbaı bir taze çiçeksin